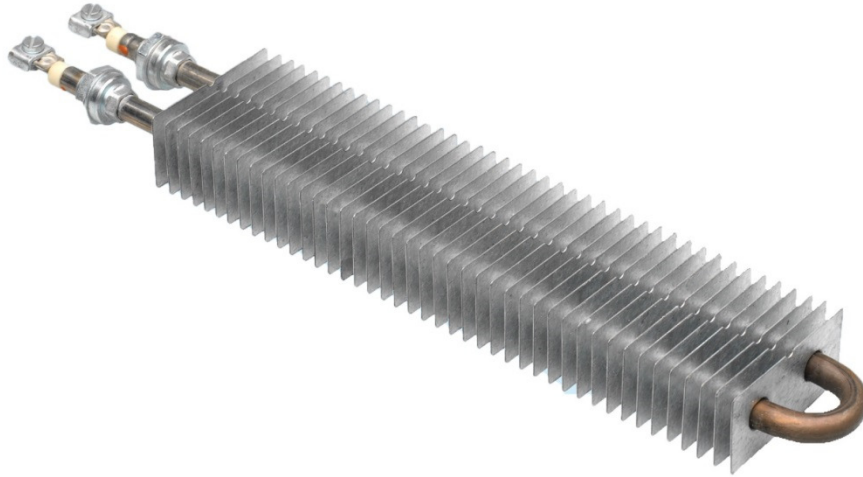
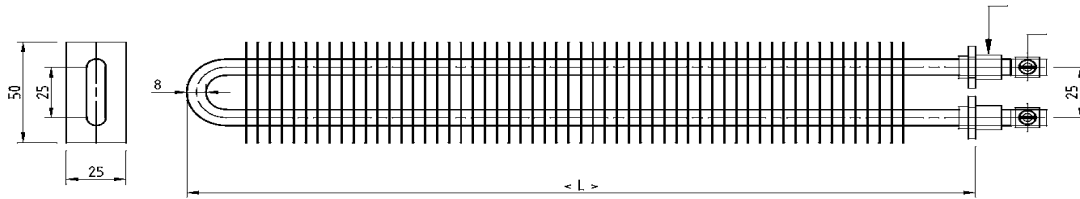


**FINNED HEATING ELEMENT**



Finned Heating elements are extremely suitable for the heating of air by their design. You can apply the elements in air ducts and heaters etc. They are available in standard 230V with steel aluminized slats or with stainless steel slats on request.

Material tube elements are AISI 304/321.



Type AL	Vermogen Watt	Spanning V.	artikel	W/cm <sup>2</sup>	Lengte mm
Execution:	100	230	105312	1,2	200
Slats Aluzinc 25x50mm(HOH 5,5mm)	150	230	110879	1,8	200
Clam nipple M12x1,25mm, Steel galvanized	200	230	111460	2,5	200
Tube Ø8mm RVS 304/321	500	230	104439	4,5	260
Connections BM4-P	600	230	104786	4,6	300
Max. working temperature 200°C. (min. 2 m/s)	750	230	102619	4,6	370
Max. working temperature 60°C. ( 0 m/s)	850	230	111461	4,4	430
	1000	230	102029	4,4	500
	1250	230	111462	4,3	620
	1500	230	103521	4,3	740
	2000	230	111463	4,3	970
	2500	230	111464	4,4	1180
As above, with AISI slats 50x25mm	600	230	104208	4,6	330
	600	277	105311	4,6	330

Other executions and big quantities on request.

Subject to changes.